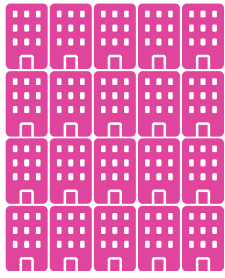




By the Numbers

Get to know Icon by the Impact We Make for Our Customer Communities Like Yours Each and Every Day



(1 building = 20 communities)

We are Utilized by
2000+
Communities Like Yours



(1 person = 10K seniors)

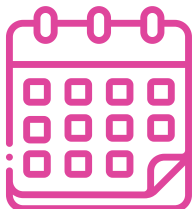
Icon Supports
300,000+
Seniors



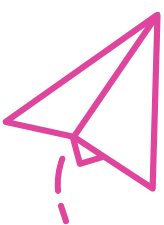
Peace of Mind Delivered to
~ 42,000
Family Members Using the
Family Engagement App



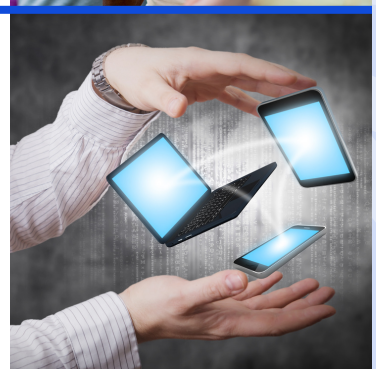
In the Last Twelve Months
~ 3,000,000
Life Enrichment Events Were
Managed with Icon



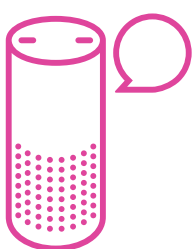
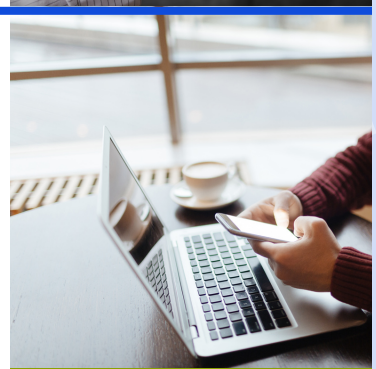
An Average of
250,000
Events are Managed Monthly



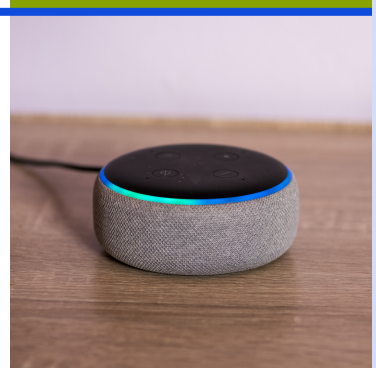
In the Last Twelve Months
~ 36,928,015
Communications Were Sent
from Communication 360



In Just One Month
1,641,931
Communications Were Sent
from Communication 360



In the Last Twelve Months
~ 40,000
Question Were Asked of
Alexa Via Community Voice



To learn more about Icon and how we can help your community visit goicon.com today and request a demo!